

Check Before You Spray!

Practicing Stewardship in Pesticide Application

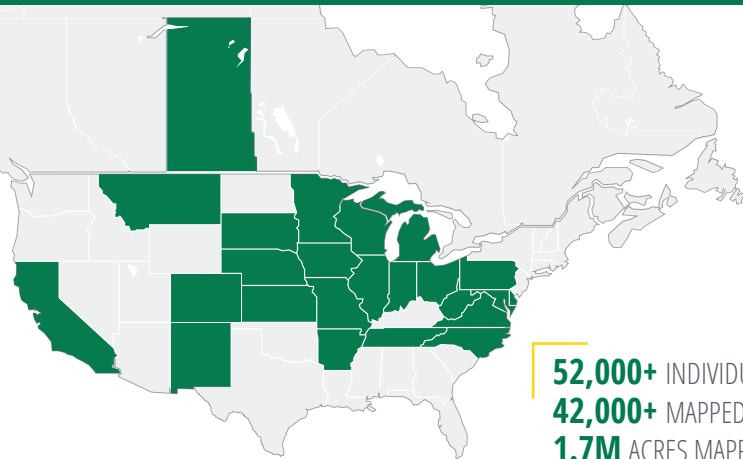
FieldWatch® is a non-profit with a web-based mapping registry that promotes communication between pesticide applicators, crop producers, and beekeepers in support of ongoing stewardship activities. FieldWatch is The Source of Trusted Data in North America promoting sustainability for plants, pollinators and people.

- FieldWatch offers free, accurate and secure online mapping tools with an easy-to-use Google Maps™ interface.
- FieldWatch operates DriftWatch™, BeeCheck™, CropCheck™, and the SeedFieldCheck™ registries.
- Designed by the Purdue University Agricultural and Biological Engineering Department with input and support from Purdue University's Cooperative Extension.



A Critical Tool for Pesticide Applicators

Visit the FieldCheck map before spraying to locate areas identified for sensitivity to improve decision-making and avoid damage from spray drift.



52,000+ INDIVIDUAL USERS
42,000+ MAPPED SITES
1.7M ACRES MAPPED

Use FieldCheck if You Work in:

- ✓ Agriculture (ground and aerial)
- ✓ Vegetation management for right-of-way and invasive species
- ✓ Mosquito control
- ✓ Vegetation management
- ✓ Turf and ornamental grass
- ✓ Provides alerts to applicators when new and modified sites are added to the registry maps

Locate Sensitive Areas Mapped for View by Users of FieldWatch's Registries:

- Apiaries
- Specialty crop locations
- Row crops in select states
- Presence and location of seed field workers in near real time in select states

Register Today at fieldcheck.org



Or Download the FieldCheck app for iOS and Android from the Apple Store and the Google Play Store.

Follow Us: [@FieldWatchInc](https://twitter.com/FieldWatchInc) · <https://bit.ly/FWDWBlog> · Email Us: info@fieldwatch.com
FieldWatch, Inc. 1281 Win Hentschel Blvd. Suite 1300, West Lafayette, IN 47906

FOR APPLICATORS

Three Ways to Utilize DriftWatch/BeeCheck



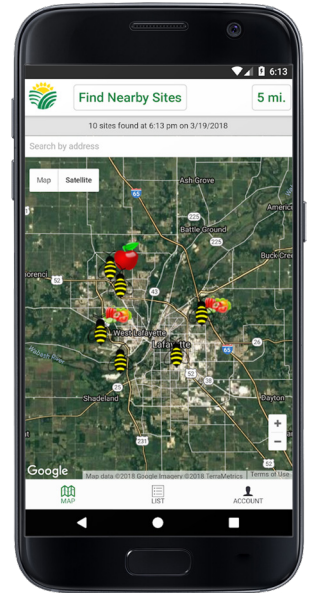
Option 1: Frequently Visit the Public Map (Free)

- View all specialty crop sites.
- View most beehives (beekeepers have the option to display hives only to registered applicators).



Option 2: Register in FieldCheck as an Applicator (Free)

- View all crop sites and beehives.
- Receive email alerts when new sites are added to your area.
- Eligible to download the FieldCheck app (available free for Android and iOS) to see all sites in DriftWatch, including all beehives and SeedFieldCheck sites.
- Add out of scope non-specialty crop and sensitive sites to a private 'annotation layer,' visible only by you and those you share it with.



Option 3: Member Data Subscription (Voluntary Membership)

- View all sites, including beehives.
- Periodically download sites to your mapping software or receive livestream through your software provider.
- Applicators from government entities (states, cities, counties, university extension, etc.) may download or stream the data for free.
- Contact FieldWatch for more information.

NEW in Nebraska! SeedFieldCheck: A Seed Field Worker Notification System

In order to reduce pesticide exposures to field workers, **SeedFieldCheck™** will provide broad communication to pesticide applicators that accurately describes where and when seed field workers will be present in seed production fields. These sites will be integrated on the map with the other FieldWatch registries.



Two-Way Communication

Use **DriftWatch™** and **BeeCheck™** to communicate plans with growers and work out a mutual understanding.

Communication + Cooperation + Collaboration